

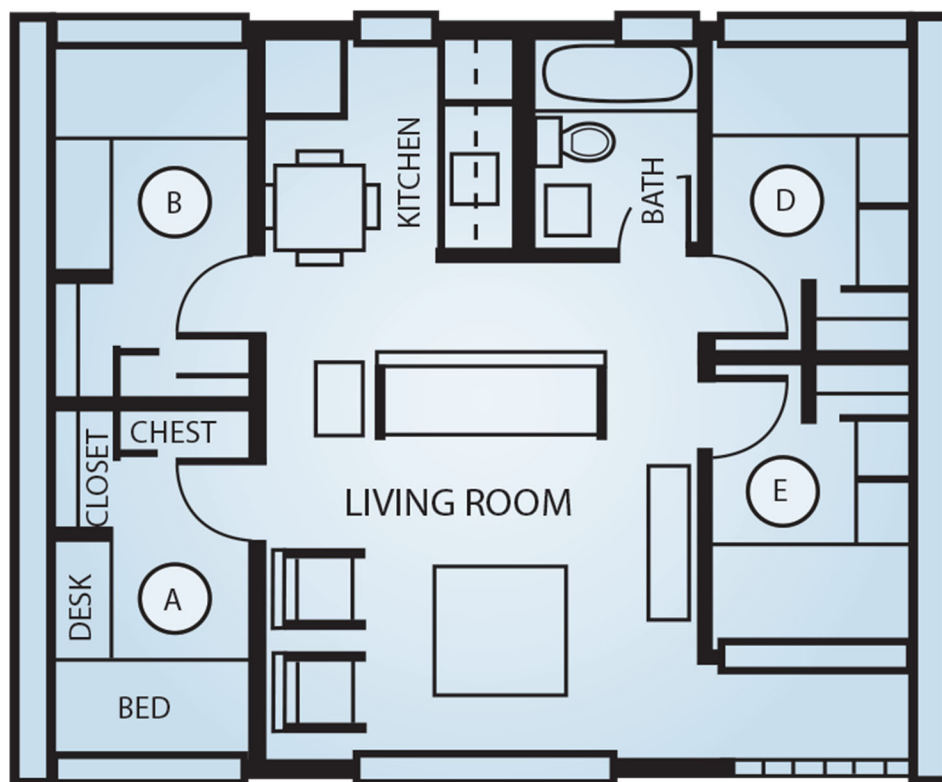
Housing Options at Union University

Union is offering suites in two different housing complexes. There are no elevators in either complex, only stairs. You will need to provide your own kitchen supplies (dishes/utensils/paper products), laundry supplies (detergent/fabric softener/iron/ironing board) and linens (extra-long twin sheets/blankets/pillows/towels). Trash bags and toilet paper are provided. Each suite has four bedrooms and four beds. If more than 4 people are staying in your suite, you will need to provide any air mattresses, other padding or cots desired for those who will not be sleeping on beds. Suites have a maximum occupancy of 8 or 10 people as detailed below.

Union University staff will make all room assignments. However, please do not contact Union University directly regarding housing! Contact Stoa's administrator with your questions at Info@stoausa.org.

HERITAGE ONE-BATHROOM SUITE

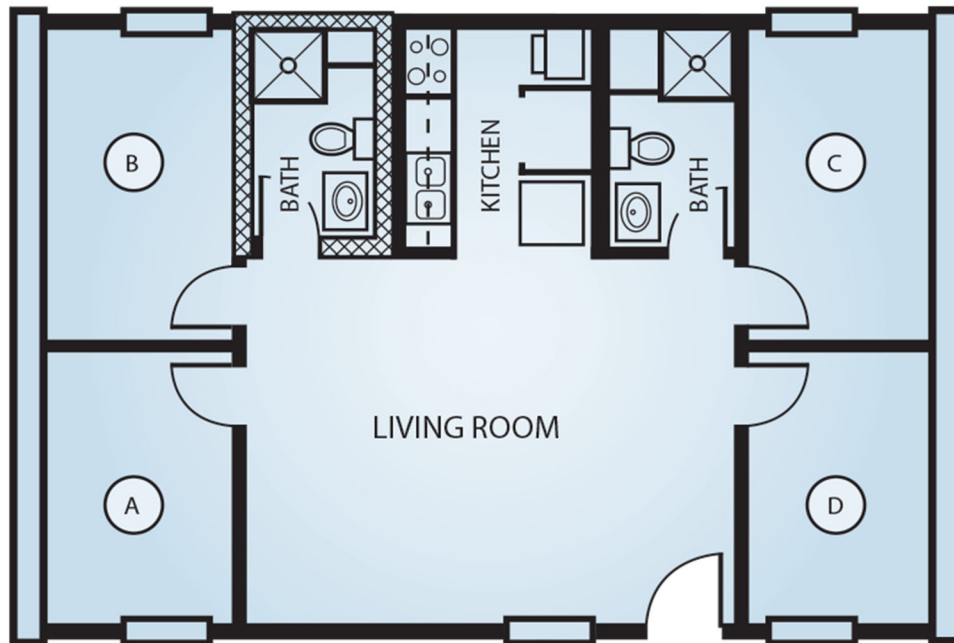
4 bedrooms + 1 bathroom for \$350/week



Includes 4 private bedrooms, each with an extra-long twin bed (not a bunk), living room, full kitchen (excluding microwave), and a communal laundry facility. Maximum total of 8 occupants in a one-bathroom suite: 4 in beds and up to 4 on the floor. There must be a Responsible Party at least 25 years old in each suite.

QUADS TWO-BATHROOM SUITE

4 bedrooms + 2 bathrooms for \$450/week



Includes 4 private bedrooms, each with an extra-long twin bed (not a bunk), living room, full kitchen with microwave, and in-suite laundry. Maximum total of 10 occupants in a 2-bathroom suite: 4 in beds and up to 6 on the floor. There must be a Responsible Party at least 25 years old in each suite.

WHEELCHAIR ACCESSIBLE SUITES AVAILABLE

\$350/week in Heritage or \$450/week in Quads

These suites include 3 private bedrooms, each with 1 extra-long twin bed (not a bunk). Maximum total occupancy of these suites is 6 guests: 3 in beds and up to 3 on the floor. NOTE: There is a kitchen and washer/dryer accessible in or near these suites. There must be a Responsible Party at least 25 years old in each suite.

If you require ADA compliant housing, please note this on your housing registration where indicated.

Questions? Contact Stoa's administrator at Info@stoausa.org.
Please do not contact Union University regarding housing!